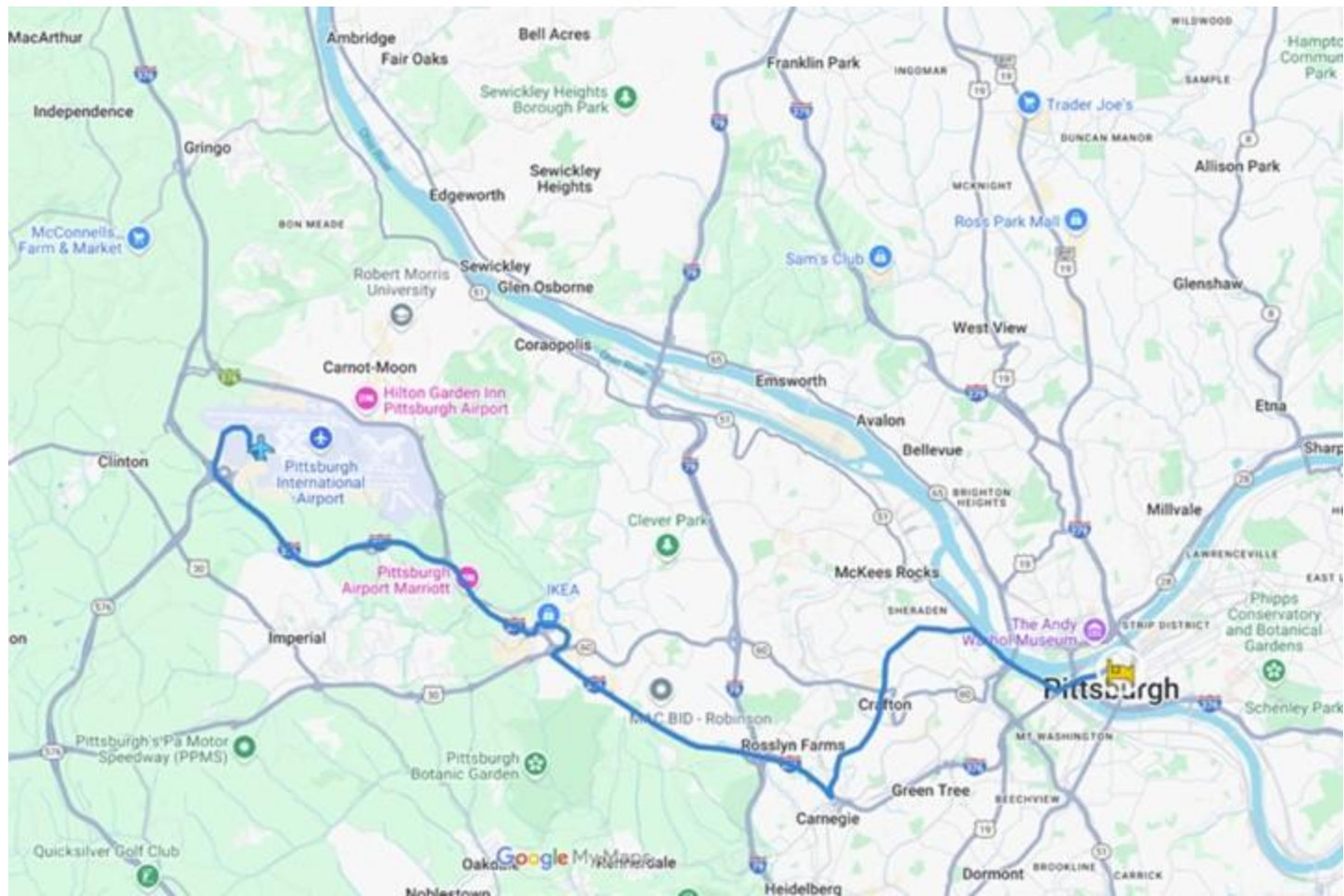


Entire trip - Air = 4511 miles/ Bike = 390.2 miles/ Ground Transportation = 43.5 miles - Pittsburgh 2 DC



15.62 mi
Distance

1:59:12
Time

7.9 mph
Avg Speed

738 ft
Total Ascent



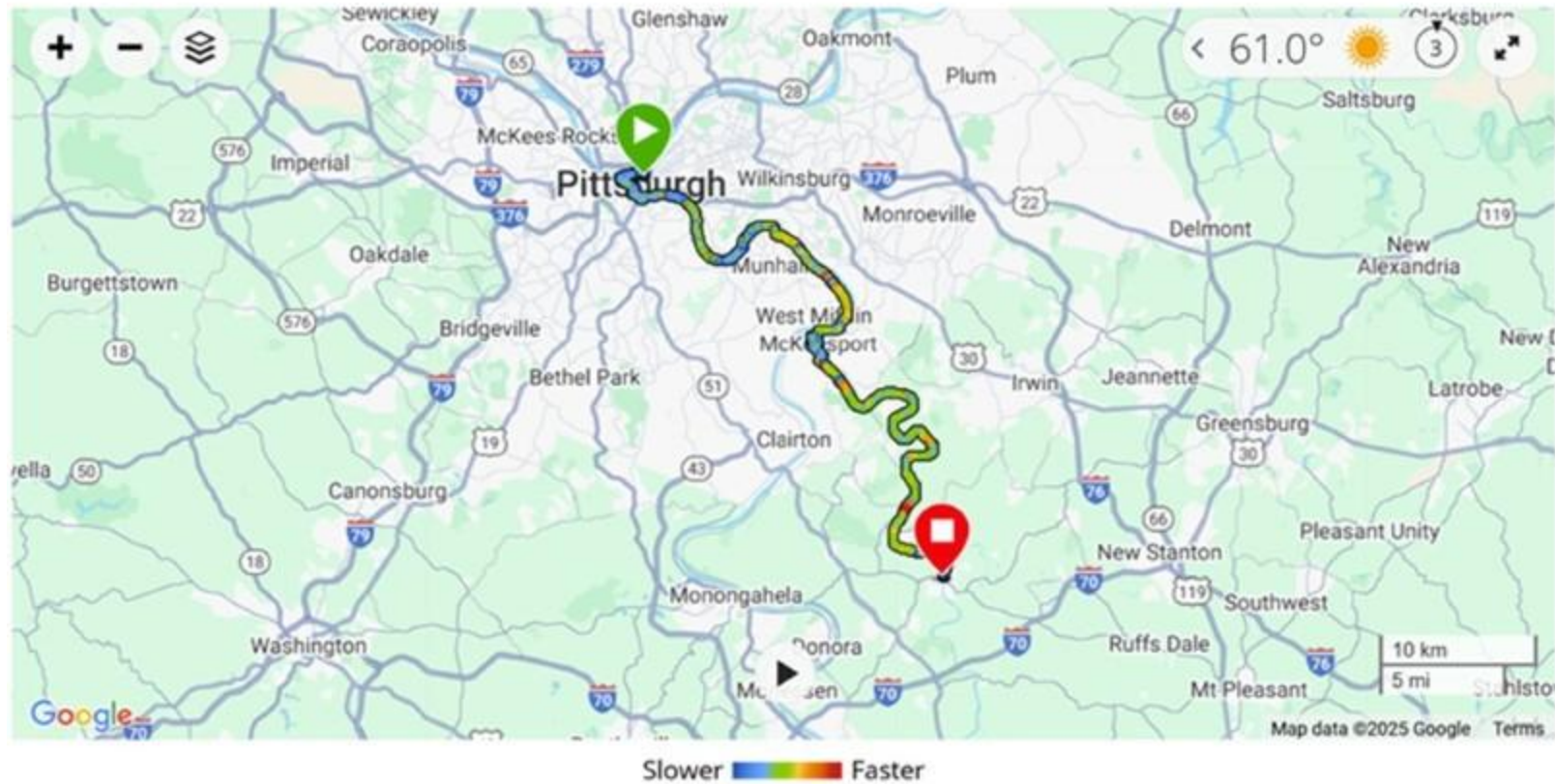
Day 2 Wednesday, May 7, 2025 - Cycle 15.6 miles - Around Pittsburgh, Pennsylvania

37.25 mi
Distance

3:43:38
Time

10.0 mph
Avg Speed

686 ft
Total Ascent



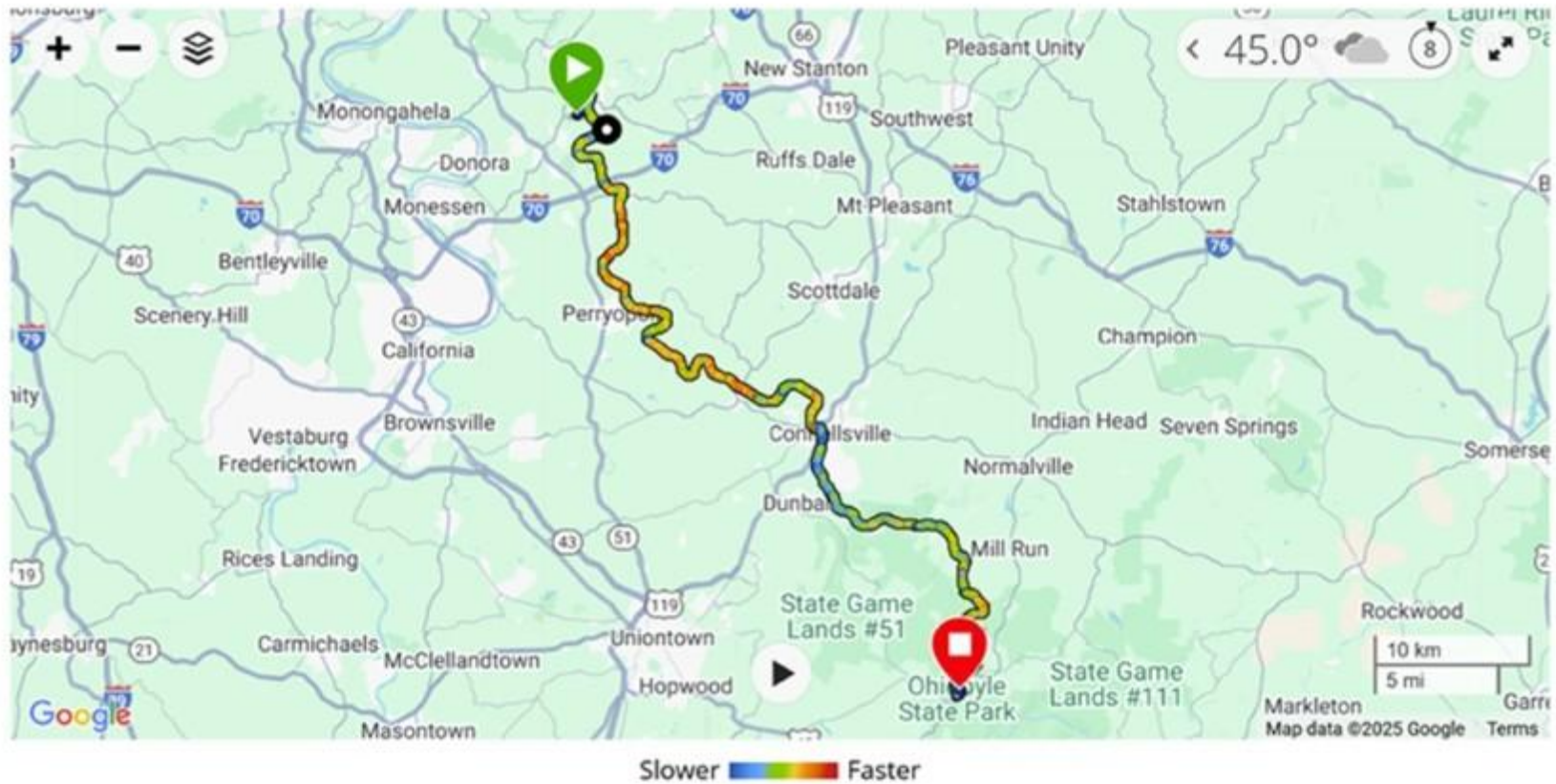
Day 3 Thursday, May 8, 2025 - Cycle 37.2 miles - Pittsburgh, PA to West Newton, PA

43.84 mi
Distance

3:58:26
Time

11.0 mph
Avg Speed

689 ft
Total Ascent



Day 4 Friday, May 9, 2025 - Cycle 43.8 miles - West Newton, PA to Ohiopyle, PA

42.08 mi
Distance

3:57:08
Time

10.6 mph
Avg Speed

1,129 ft
Total Ascent



Day 5 Saturday, May 10, 2025 - Cycle 42.1 miles - Ohio State Park, PA to Meyersdale, PA

32.36 mi
Distance

3:10:45
Time

10.2 mph
Avg Speed

377 ft
Total Ascent



Day 6 Sunday, May 11, 2025 - Cycle 32.4 miles - Meyersdale, PA to Cumberland, MD

52.33 mi
Distance

5:07:15
Time

10.2 mph
Avg Speed

1,699 ft
Total Ascent



Day 7 Monday, May 12, 2025 - Cycle 53.8 miles - Cumberland, MD to Little Orleans, MD

43.01 mi

Distance

4:06:24

Time

10.5 mph

Avg Speed

741 ft

Total Ascent



Slower Faster

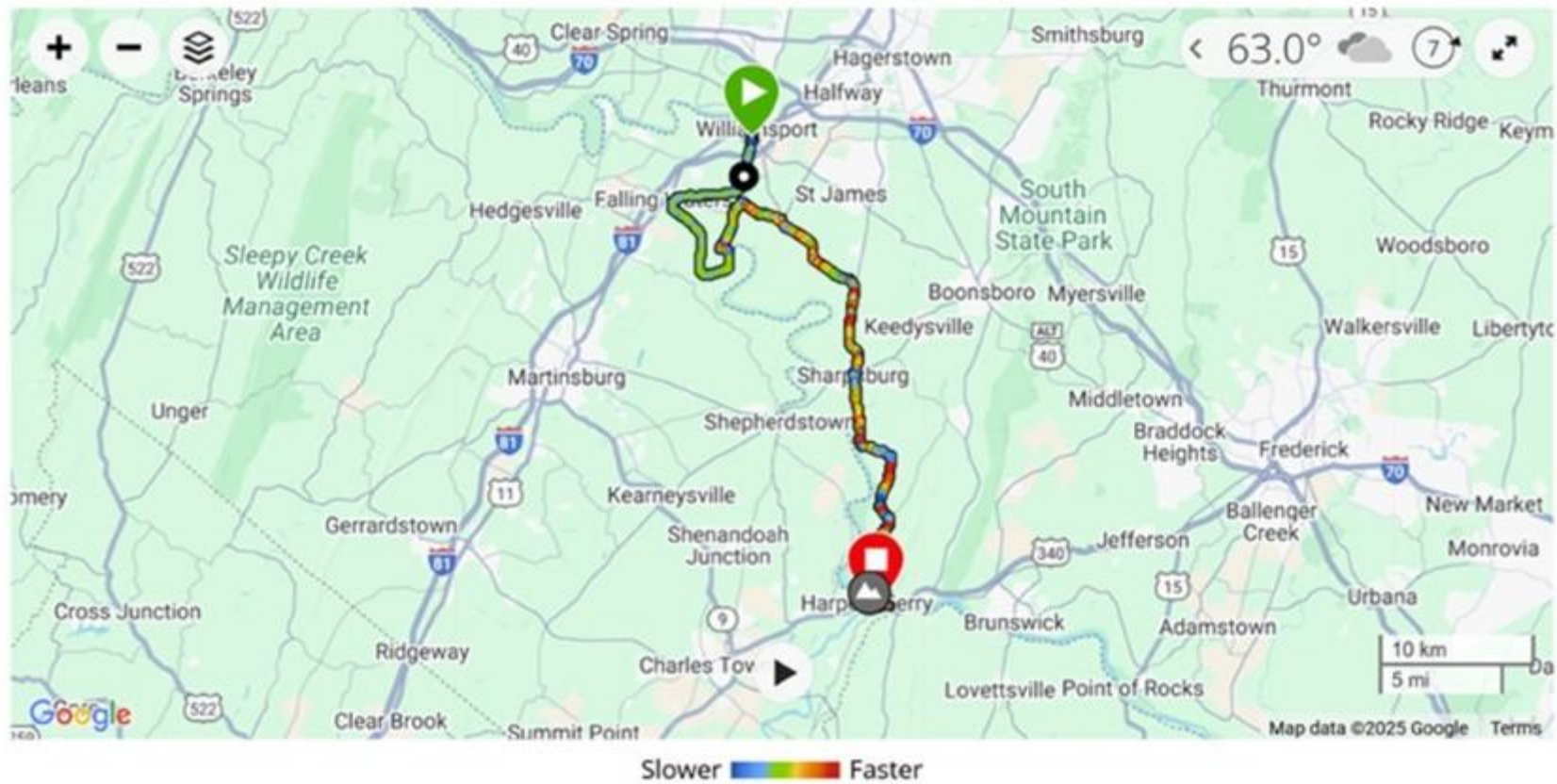
Day 8 Tuesday, May 13, 2025 - Cycle 43 miles - Little Orleans, MD to Williamsport, MD

36.19 mi
Distance

3:35:13
Time

10.1 mph
Avg Speed

1,690 ft
Total Ascent



Day 9 Wednesday, May 14, 2025 - Cycle 36.2 miles - Williamsport, MD to Harpers Ferry, WV

76.06 mi

Distance

7:22:09

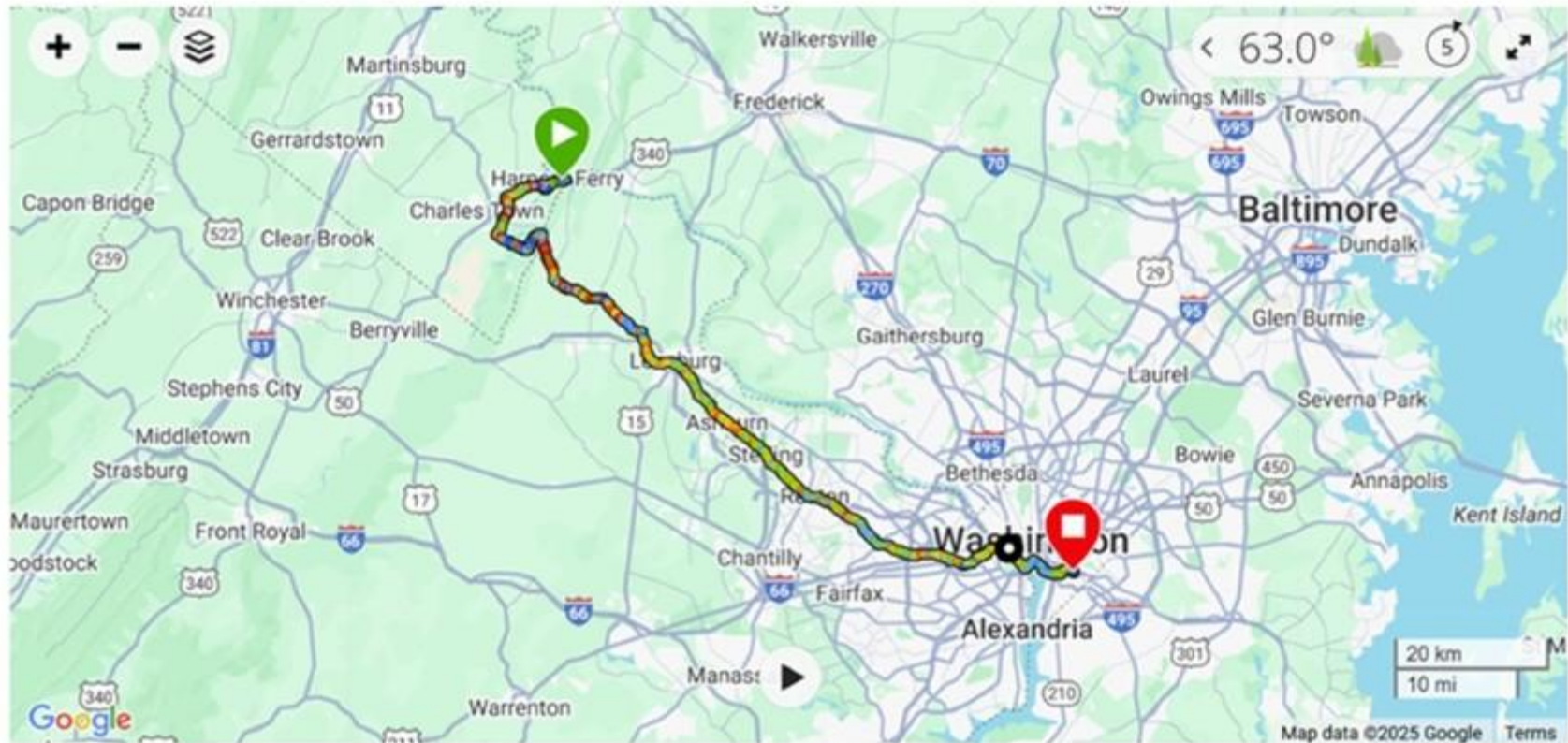
Time

10.3 mph

Avg Speed

3,763 ft

Total Ascent



Slower Faster

Day 10 Thursday, May 15, 2025 - Cycle 76.1 miles - Harpers Ferry, WV to Washington DC

10.03 mi

Distance

1:33:13

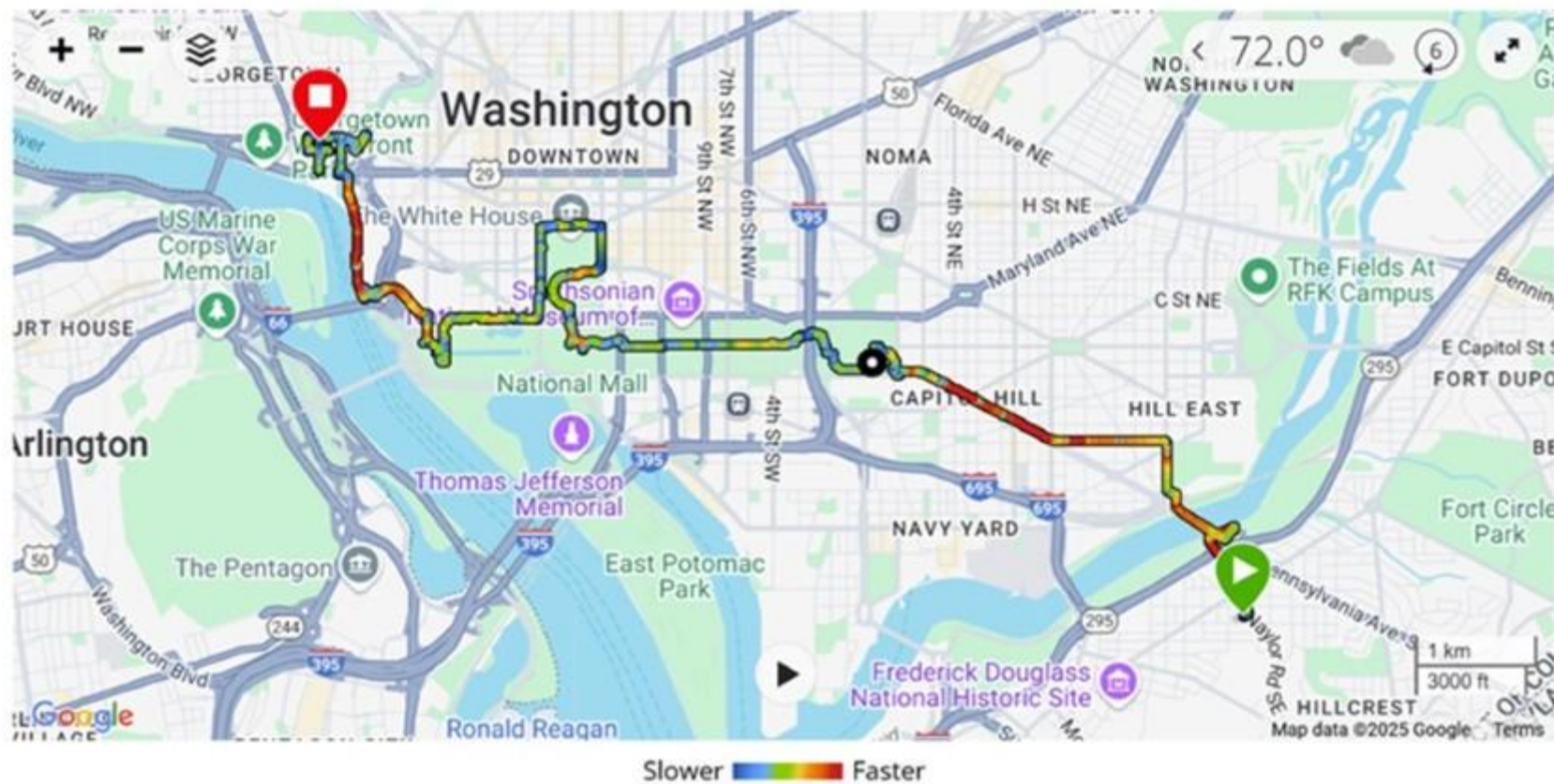
Time

6.5 mph

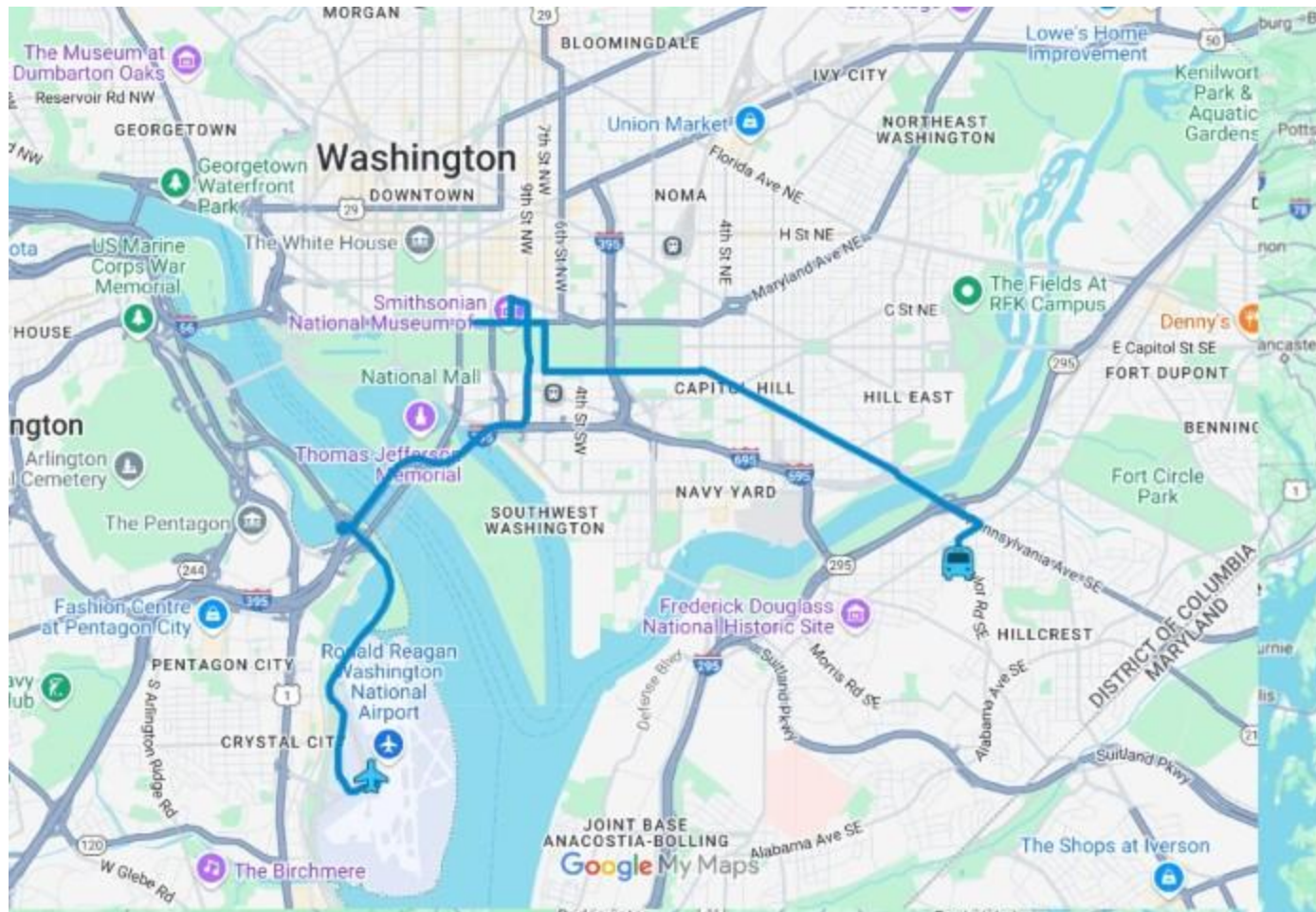
Avg Speed

466 ft

Total Ascent



Day 11 Friday, May 16, 2025 - Cycle 10 miles - Washington DC



Day 12 Saturday, May 17, 2025 - Ground 7.5 miles – VRBO to National Museum of Natural History to DCA